

MSVB_CONV 2005.1

Manual

Description

MSVB_CONV is a Visual Basic application that enables you to convert drawings between the following formats: thinkdesign (.E2), GBG DraftMaker (.D) e AutoCAD (.DWG/.DXF).

The software is based upon some thinkdesign 2005.1 libraries; this software is therefore required. thinkdesign is property of think3: www.think3.com; no thinkdesign license is required to use MSVB_CONV.

Installation procedure

Install thinkdesign 2005.1


1. Insert the CD and follow the on-screen instructions

MSVB_CONV installation

Normally, you would install MSVB_CONV simply by copying the software in the proper folders. INSTALLA.BAT is provided just to do this.

Double-click and wait for the windows to close. Non other action should be required.

If when you start MSVB_CONV you get any errors,run a full install of the program:

1. Close all programs, antivirus and antispam included.
2. Double-click Setup.exe
3. Click OK in the welcome page.
4. Click  to start the installation process.
5. Click Continue when prompted for the Program Group.
6. Click Yes if "Version Conflict" appears.
7. Click "Ignore" and then "Yes" if you get any other error messages.
8. Click OK if clgen.dll doesn't get properly registered
9. Click OK to finish the installation.

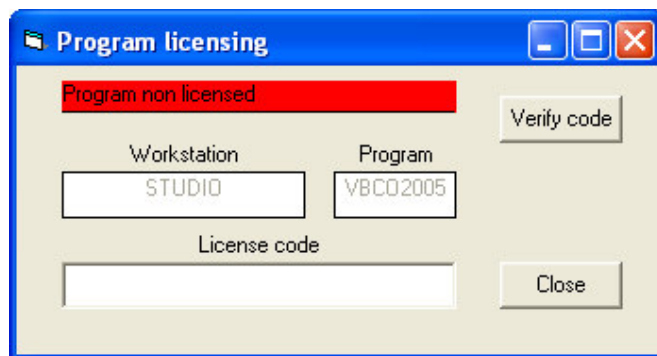
First run and license

Start → All Programs → SelectroM → MSVB_CONV.

The first time you run it, the following dialog box is displayed.

Send marco.springhetti@selectrom.com the Workstation name and the program code (STUDIO and VBCO2005 in the figure) with the request of the password.

To license the program, enter the License code you receive by mail then click Verify code. If the code is correct, a new Save button appears. Click Save then Close. The password is stored in c:\selectrom.abl.

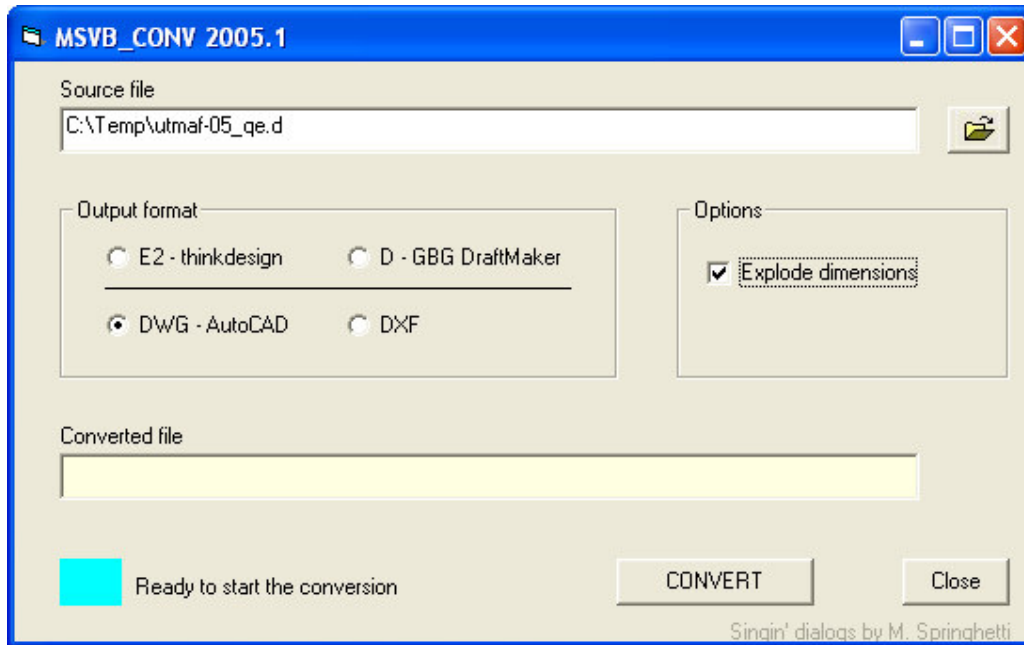



MSVB_CONV 2005.1

Manual

Usage

Start → All Programs → SelectroM → MSVB_CONV displays the following:



Use  to select the source file. Based upon the extension, MSVB_CONV selects an output format; change it if you wish.

You are enabled to check the Explode dimensions option; when you do, the dimensions will be converted to groups or blocks.

The output file path is displayed in the Converted file field; existing files will be overwritten.

Questions or problems?

Marco Springhetti – Tel +39 3482612808, fax +39 0532751021, email marco.springhetti@selectrom.com